

Kieferbäume

Jean Sibelius

Finlandia

Tondigt för orkester

Sävellys orkesterulle

Tonabichtung für Orkester

Piano arrangement

(1473)

MS

Finlandia
Tonichtung für Orchester.
Piano Arrangement

Jan Sibelius

Andante

Piano

Ped

Comp. ped.

Semplice

Ped

Comp. ped.

Ped

Ped

Helsingfors, Kungliga Musikiska Högskolan, Helsingfors

Th. Ahn, Musikdirektor

meno f

Con ped.

Ped

Ped

Ped

Ped

Ped

Ped

Con ped



Handwritten musical score for the first system. It consists of two staves: a treble staff and a bass staff. The music is written in a key with two flats (B-flat and E-flat) and a 2/4 time signature. The first staff contains several measures of music, including a triplet of eighth notes. The second staff contains corresponding bass notes and rests. Dynamic markings include "Piu forte" in the upper right and "Ped" (pedal) in the lower left. There are also some handwritten annotations like "3" and "2" above notes.

Handwritten musical score for the second system. It consists of two staves: a treble staff and a bass staff. The music continues from the first system. The first staff has several measures with notes and rests. The second staff has corresponding bass notes and rests. Dynamic markings include "ff" (fortissimo) and "Ped" (pedal). There are also some handwritten annotations like "4" and "2" above notes.

Allegro assai

Handwritten musical score for the third system, marked "Allegro assai". It consists of two staves: a treble staff and a bass staff. The music is more rhythmic and complex than the previous systems. The first staff has several measures with notes and rests. The second staff has corresponding bass notes and rests. Dynamic markings include "ff" (fortissimo) and "Ped" (pedal). There are also some handwritten annotations like "4" and "3" above notes.

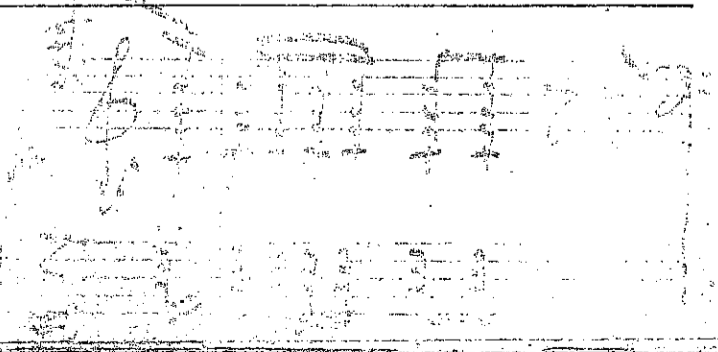
Handwritten musical score for the fourth system. It consists of two staves: a treble staff and a bass staff. The music is very complex and rhythmic. The first staff has several measures with notes and rests. The second staff has corresponding bass notes and rests. Dynamic markings include "Cres. possibile" (Crescendo possibile) and "Ped. 3" (pedal 3). There are also some handwritten annotations like "3" and "2" above notes.

Handwritten musical notation for the first system. It consists of a grand staff with treble and bass clefs. The music features complex chordal textures with many notes beamed together. A 'Ped' marking is present in the lower right of the system. There are asterisks at the end of the system.

Handwritten musical notation for the second system, similar in style to the first. It features a grand staff with treble and bass clefs and complex chordal textures. A 'Ped' marking is present in the lower right of the system. There are asterisks at the end of the system.

Handwritten musical notation for the third system. It includes dynamic markings 'mf' and 'Cresc'. The notation features a grand staff with treble and bass clefs and complex chordal textures. 'Ped' markings are present in the lower right of the system. There are asterisks at the end of the system.

Handwritten musical notation for the fourth system. It includes dynamic markings 'mf' and 'Cresc'. The notation features a grand staff with treble and bass clefs and complex chordal textures. 'Ped' markings are present in the lower right of the system. There are asterisks at the end of the system.



Allegro

Handwritten musical notation for the first system. The treble staff begins with a treble clef and a key signature of two flats (B-flat and E-flat). The bass staff begins with a bass clef and the same key signature. The music consists of several measures with notes, rests, and dynamic markings. A *Cresc. molto* marking is present above the first few measures. A *Comp ped* marking is at the end of the system. The notation includes slurs, accents, and various note values.

Handwritten musical notation for the second system. It continues the piece with treble and bass staves. The notation includes slurs, accents, and various note values. A *Ped.* marking is visible at the end of the system. The music shows a continuation of the melodic and harmonic ideas from the first system.

Handwritten musical notation for the third system. It continues the piece with treble and bass staves. The notation includes slurs, accents, and various note values. A *Comp ped.* marking is at the beginning of the system. The music shows a continuation of the melodic and harmonic ideas from the first system.

Handwritten musical notation for the fourth system. It continues the piece with treble and bass staves. The notation includes slurs, accents, and various note values. A *marcatissimo* marking is at the beginning of the system. The music shows a continuation of the melodic and harmonic ideas from the first system.

Faint, ghosted musical notation visible at the bottom of the page, likely from the reverse side or a previous page. It shows the outlines of staves and notes, but they are not clearly legible.

Handwritten musical notation for the first system. The top staff is in treble clef and the bottom staff is in bass clef. The key signature has three flats (B-flat, E-flat, A-flat). The time signature is 2/4. The music consists of several measures with notes, rests, and dynamic markings. A 'cresc' marking is present in the second measure of the top staff. A 'Ped' marking is present in the second measure of the bottom staff. There is a small '4' above the first measure of the top staff and an asterisk '*' at the end of the bottom staff.

Handwritten musical notation for the second system. The top staff is in treble clef and the bottom staff is in bass clef. The key signature has three flats. The music includes notes, rests, and dynamic markings. A 'f' marking is in the first measure of the top staff. A 'mf' marking is in the second measure of the top staff. A 'crescendo' marking is in the third measure of the top staff. A 'Con ped.' marking is in the first measure of the bottom staff. There are also some illegible markings in the bottom staff.

Handwritten musical notation for the third system. The top staff is in treble clef and the bottom staff is in bass clef. The key signature has three flats. The music includes notes, rests, and dynamic markings. A 'mf' marking is in the second measure of the top staff. A 'Cresc.' marking is in the third measure of the top staff. A 'f' marking is in the fourth measure of the top staff. There are 'Ped.' markings in the bottom staff under the second, third, and fourth measures.

Handwritten musical notation for the fourth system. The top staff is in treble clef and the bottom staff is in bass clef. The key signature has three flats. The music includes notes, rests, and dynamic markings. There is a 'Ped' marking in the bottom staff under the second measure.

Faint handwritten musical notation at the bottom of the page, mostly illegible. It appears to be a continuation of the musical score or a separate sketch.

Handwritten musical notation for measures 8 and 9. The system consists of two staves. The upper staff is in treble clef with a key signature of two flats and a 2/4 time signature. It contains a melodic line with eighth and sixteenth notes. The lower staff is in bass clef with the same key signature and time signature, containing a bass line with chords and some slurs. The number '8' is written at the end of the system.

Handwritten musical notation for measures 10 and 11. The system consists of two staves. The upper staff is in treble clef with a key signature of two flats and a 2/4 time signature. It contains a melodic line with slurs and dynamic markings 'mf' and 'Cresc.'. The lower staff is in bass clef with the same key signature and time signature, containing a bass line with chords and dynamic markings 'Ped' and 'Cresc.'. The number '9' is written at the end of the system.

Handwritten musical notation for measures 12 and 13. The system consists of two staves. The upper staff is in treble clef with a key signature of two flats and a 2/4 time signature. It contains a melodic line with slurs and dynamic markings 'mf' and 'Cresc.'. The lower staff is in bass clef with the same key signature and time signature, containing a bass line with chords and dynamic markings 'Ped' and 'Cresc.'. The word 'Ima' is written above the upper staff. The number '12' is written at the end of the system.

Handwritten musical notation for measures 14 and 15. The system consists of two staves. The upper staff is in treble clef with a key signature of two flats and a 2/4 time signature. It contains a melodic line with slurs and dynamic markings 'mf' and 'Cresc.'. The lower staff is in bass clef with the same key signature and time signature, containing a bass line with chords and dynamic markings 'Ped' and 'Cresc.'. The number '13' is written at the end of the system.

Ped *

148

Ped * Ped * Con pedale

Ped.

Ped.

forte assai

Ped *Con pedale*

ms 7

8/9

164

ms 7
ms 7
ms 7

[10a]

168

Handwritten musical notation for measures 168-171. The system consists of two staves. The upper staff contains a melodic line with various note values and rests. The lower staff contains a complex accompaniment with many beamed notes. Measure numbers 168, 169, 170, and 171 are indicated above the staff.

172

Handwritten musical notation for measures 172-175. The system consists of two staves. The upper staff contains a melodic line with various note values and rests. The lower staff contains a complex accompaniment with many beamed notes. Measure numbers 172, 173, 174, and 175 are indicated above the staff.

Handwritten musical notation for measures 176-179. The system consists of two staves. The upper staff contains a melodic line with various note values and rests. The lower staff contains a complex accompaniment with many beamed notes. Measure numbers 176, 177, 178, and 179 are indicated above the staff.

180

Handwritten musical notation for measures 180-183. The system consists of two staves. The upper staff contains a melodic line with various note values and rests. The lower staff contains a complex accompaniment with many beamed notes. Measure numbers 180, 181, 182, and 183 are indicated above the staff.

Faint handwritten musical notation at the bottom of the page, appearing to be a continuation of the previous system. It consists of two staves with some legible notes and rests.

Handwritten musical notation for the first system. The top staff is in treble clef and the bottom staff is in bass clef. The key signature has three flats (B-flat, E-flat, A-flat). The time signature is 2/4. The notation includes eighth and sixteenth notes, some beamed together. There are several rests. Pedal markings are present: "Ped" with a circle and vertical lines below the bass staff, and "* Ped Ped Ped Ped" below the treble staff.

Handwritten musical notation for the second system. The top staff is in treble clef and the bottom staff is in bass clef. The key signature has three flats. The notation includes eighth and sixteenth notes, some beamed together. There are several rests. Pedal markings are present: "Ped" with a circle and vertical lines below the bass staff, and "Ped" with a circle and vertical lines below the treble staff. A "Crescendo" marking is written above the treble staff.

Handwritten musical notation for the third system. The top staff is in treble clef and the bottom staff is in bass clef. The key signature has three flats. The notation includes eighth and sixteenth notes, some beamed together. There are several rests. Pedal markings are present: "Ped" with a circle and vertical lines below the bass staff. Dynamic markings include "mf cresc." and "f".

Handwritten musical notation for the fourth system. The top staff is in treble clef and the bottom staff is in bass clef. The key signature has three flats. The notation includes eighth and sixteenth notes, some beamed together. There are several rests. Pedal markings are present: "Ped" with a circle and vertical lines below the bass staff. Dynamic markings include "mf".

[12]

Crescendos molto

Ped.

3

Sempre ff

4

ff

Ped

Ped

Ped

5

12

Ped

Ped

Handwritten musical notation for the first system, featuring a treble and bass staff with various notes and rests.

Pesante

Handwritten musical notation for the second system, including the word *Pesante* and *Ped* markings.

allarg.

Handwritten musical notation for the third system, including the word *allarg.* and *Ped* markings.

a tempo.

Handwritten musical notation for the fourth system, including the word *a tempo.* and *Ped* markings.



Faint handwritten musical notation at the bottom of the page.

15.

Handwritten musical notation on a grand staff. The notation includes a treble clef and a bass clef. The key signature is B-flat major (two flats). The music is written in a style that includes various annotations and markings:

- Dynamic markings:** *ff* (fortissimo) appears multiple times.
- Performance instructions:** *Ped* (pedal) is written below the first measure.
- Handwritten notes:** There are several vertical lines of handwritten notes, possibly indicating fingerings or specific techniques, such as *pppp* and *pppppp*.
- Other markings:** A *tr* (trill) marking is present above a note in the second measure. A *** (star) is written below a note in the fourth measure. A *12/13* marking is written below the final measure.
- Staff structure:** The notation is written on a grand staff consisting of two staves. Below the first grand staff, there are several empty grand staves.

Faint handwritten musical notation in the bottom left corner, appearing as a sketch or a very light pencil drawing on a grand staff.

Faint handwritten musical notation in the bottom right corner, appearing as a sketch or a very light pencil drawing on a grand staff.